

PRINTED CIRCUIT BOARDS (Parts list on pages 23-26.)

(This schematic diagram may be modified at any time with the development of new technology.)

Notes:

- S1 : Power switch in "off" position.
 - S2 : Voltage selector switch in "240 V" position. (230 V/240 V)
 - S101 : Phono cartridge selector (PHONO SELECTOR) switch in "MC" position.
 - S102 : Recording output selector (REC SELECTOR) switch in "TAPE2/DAT" position.
 - S103 : Input selector (INPUT SELECTOR) switch in "TAPE2/DAT" position.
 - S104-1 : Muting (MUTING) switch in "off" position.
 - S104-2 : Mode (MODE) switch in "stereo" position.
 - S104-3 : Adaptor (ADAPTOR) switch in "off" position.
 - S105-1 : Tone control (TONE CONTROL) switch in "defeat" position.
 - S105-2 : Loudness (LOUDNESS) switch in "off" position.
 - S302 : Power amplifier direct (POWER AMP DIRECT) switch in "off" position.
 - S501 : Speaker selector (SPEAKERS) switch in "off" position.
-

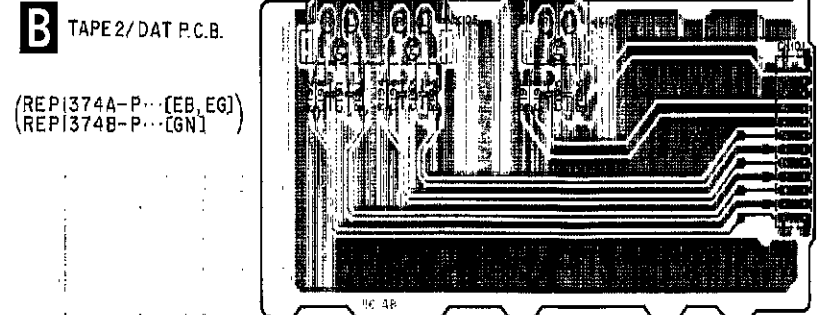
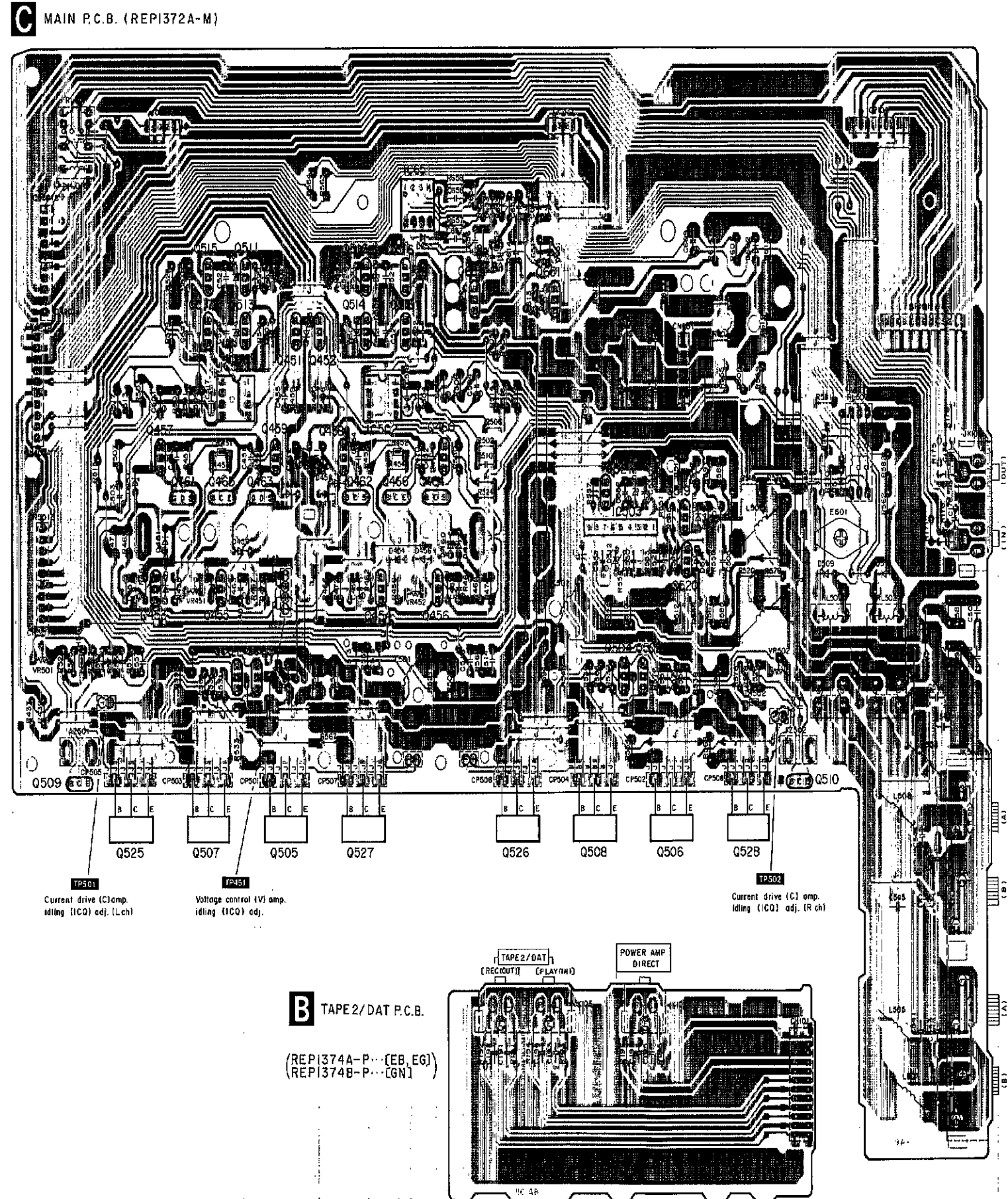
Indicated voltage values are the standard values for the unit measured by the DC electronic circuit tester (high-impedance) with the chassis taken as standard. Therefore, there may exist some errors in the voltage values, depending on the internal impedance of the DC circuit tester.

Important safety notice:
Components identified by a triangle mark have special characteristics important for safety.
Furthermore, special parts which have purposes of fire-retardant (resistors), high-quality sound (capacitors), low-noise (resistors), etc. are used. When replacing any of components, be sure to use only manufacturer's specified parts shown in the parts list.

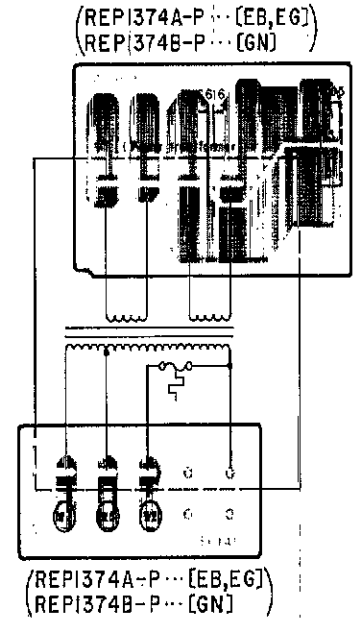
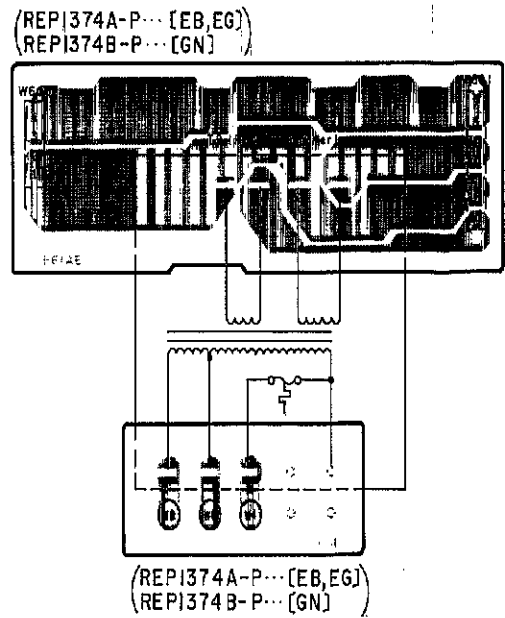
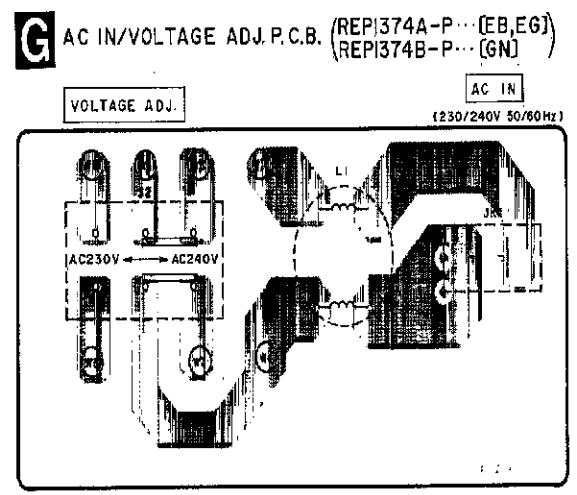
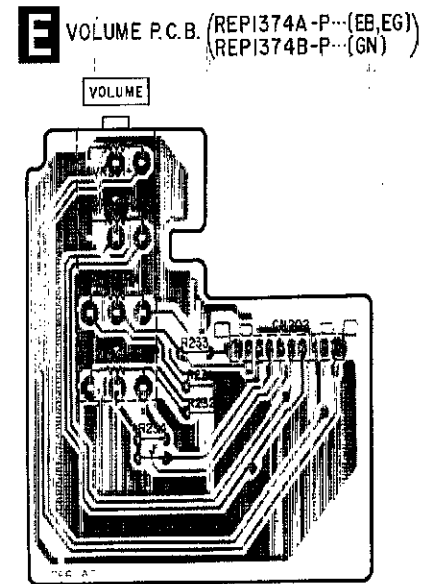
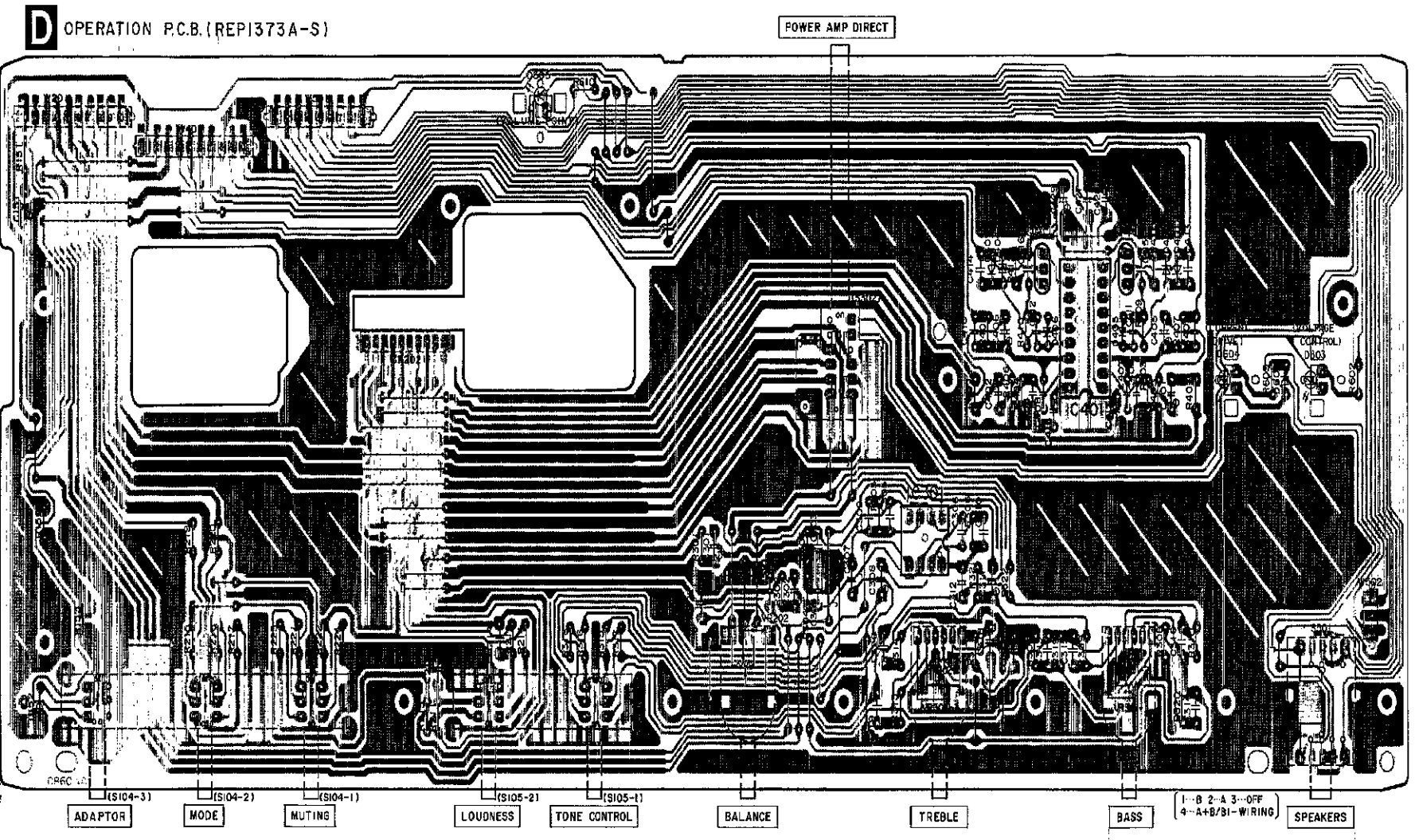
Caution!
IC and LSI are sensitive to static electricity. Secondary trouble can be prevented by taking care during repair. Cover the parts boxes made of plastics with aluminum foil. Ground the soldering iron. Put a conductive mat on the work table. Do not touch the legs of IC or LSI with the fingers directly.

Terminal guide of IC's, transistors and diodes

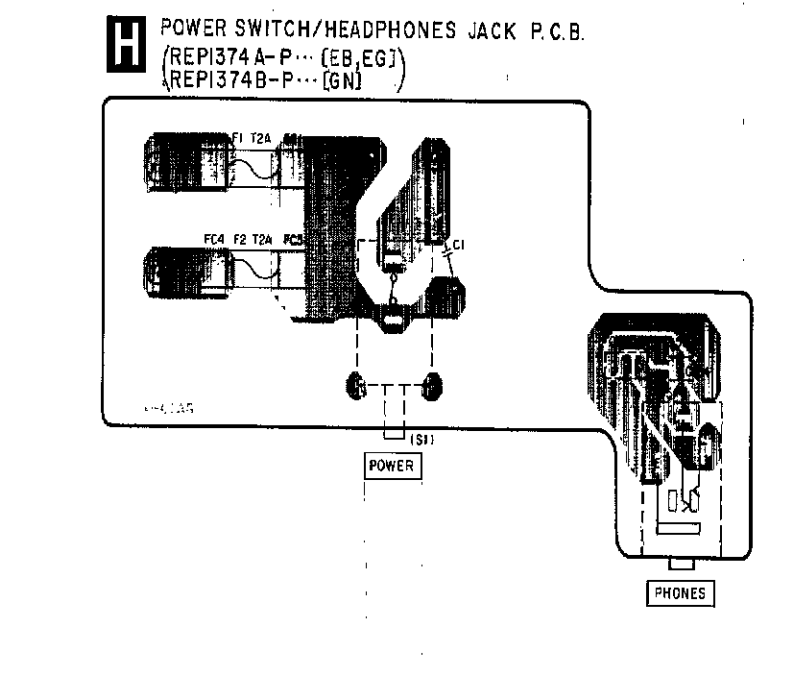
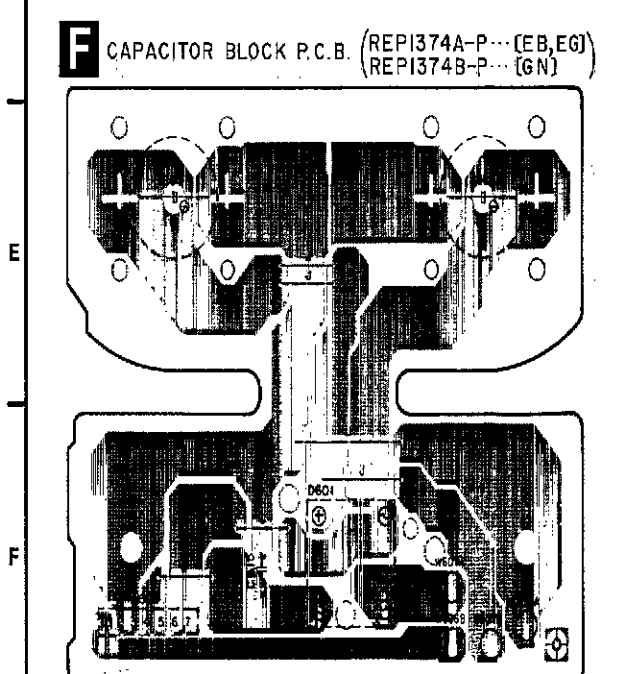
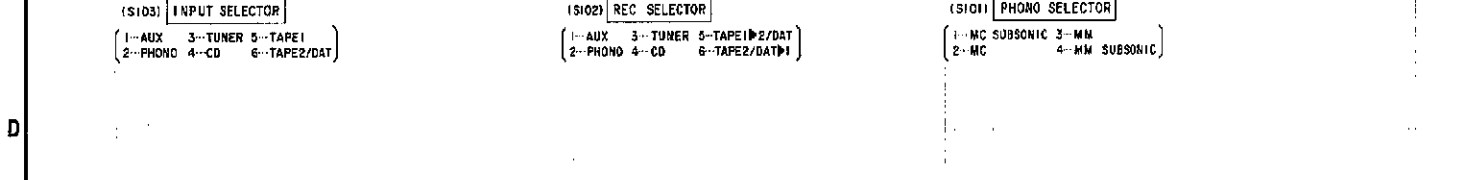
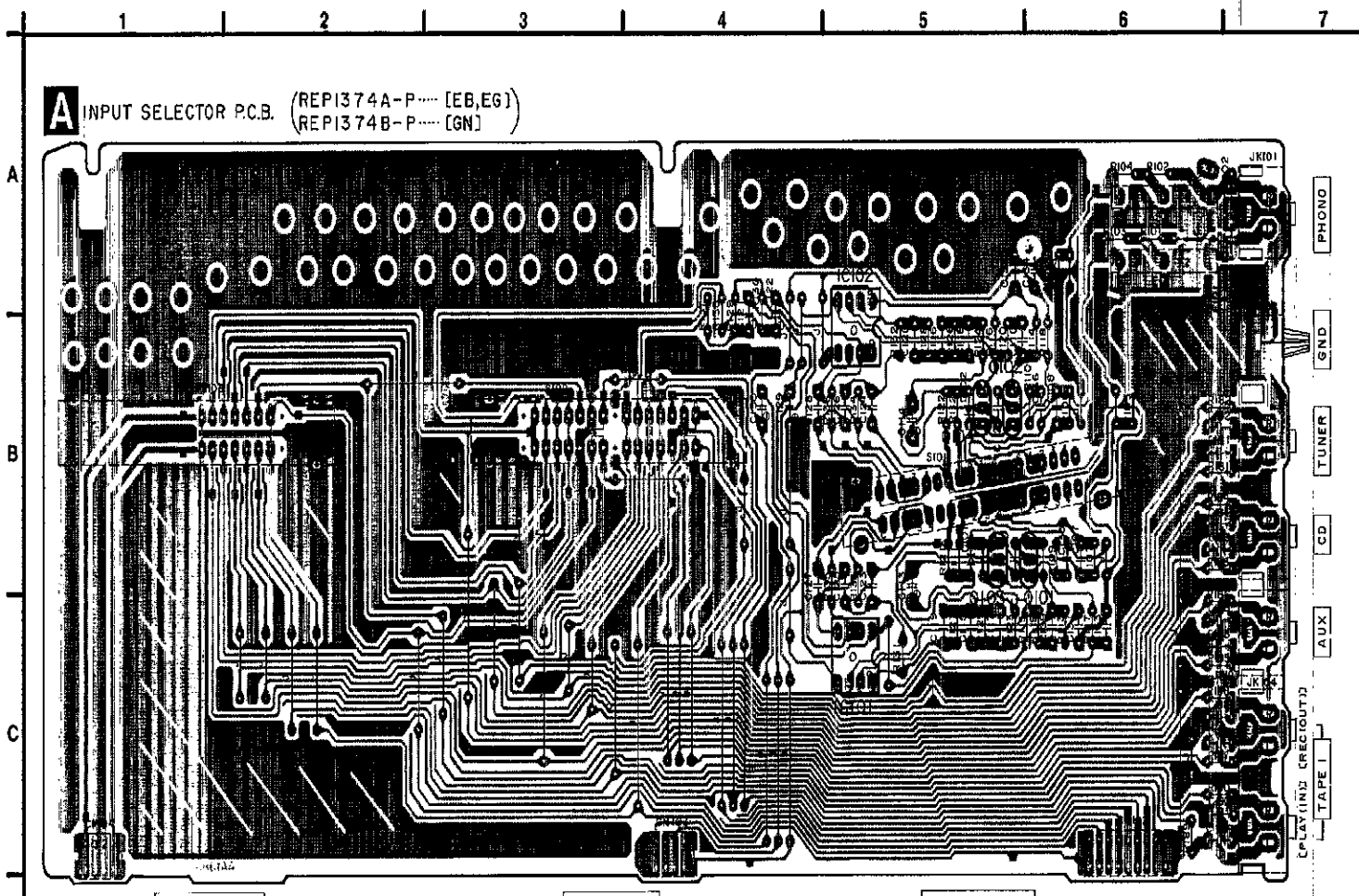
M5218AP 	M5219P 	AN7073
UPC4570C 8 Pin AN7062N 18 Pin 		2SA1265R 2SC3182R
2SA1309AQSTA 2SB1036RSTTA 2SC3311AQSTA 		2SK369GR
2SA992EFPTA 2SA1123RSTTA 2SC1815BGL 2SC2631RSTTA 		2SA1535AQRS 2SC3944AQRS 2SD1761EF
2SK20130Y 2SJ130Y 	1SR35200TB MA165TA MA167TA MA167ATA MA185TA MA29WATA 	
MA4100MTA MA4120MTA MA4180MTA MA4180MTA MA4240MTA 	MA4030MTA MA4036MTA 	
SVDS10VB20F 	LN014304P LN018304P 	



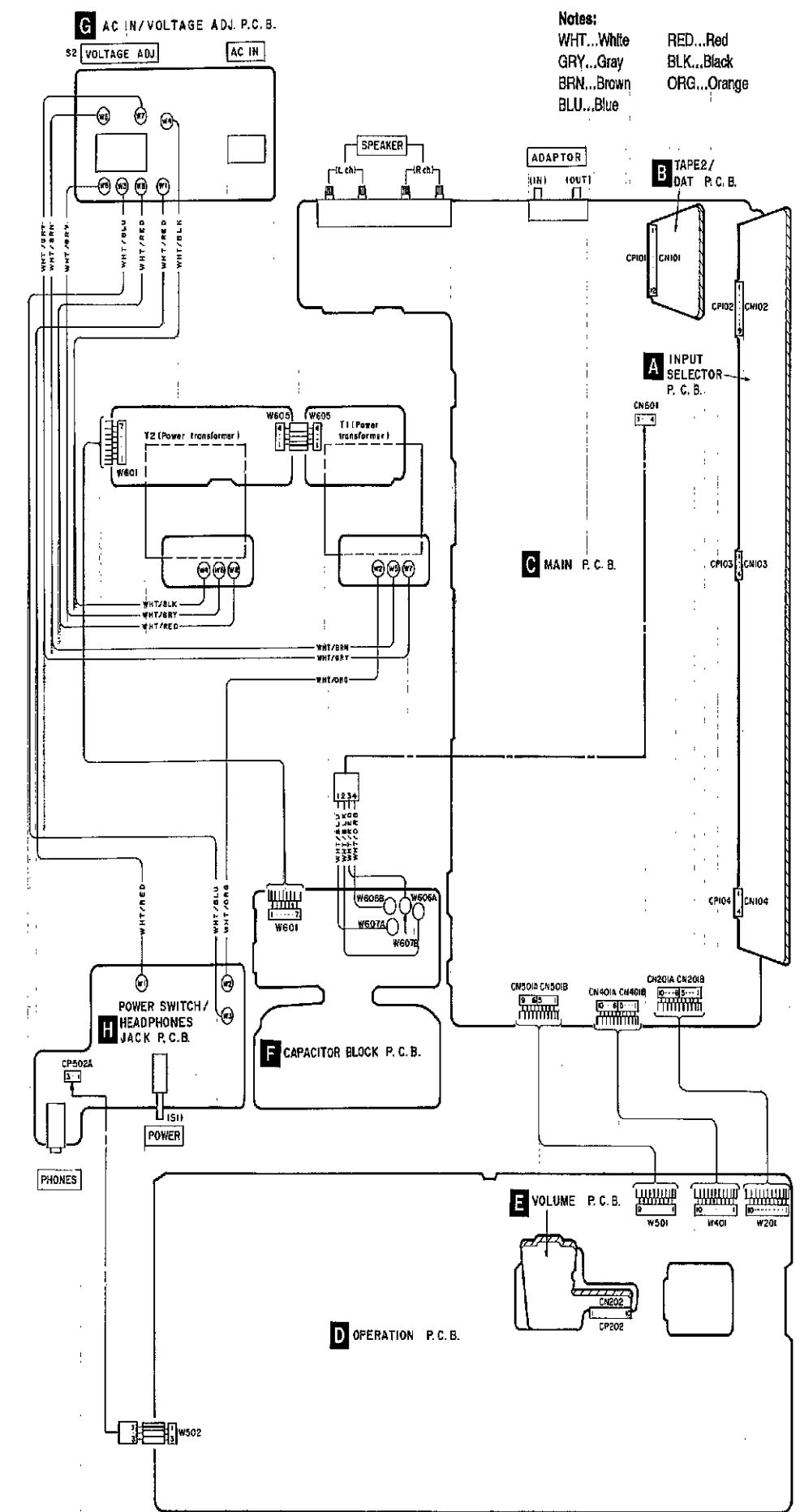
This circuit board diagram may be modified at any time with the development of new technology.



PRINTED CIRCUIT BOARDS (Parts list on pages 23-26.)



WIRING CONNECTION DIAGRAM



Notes:
 WHT...White
 GRY...Gray
 BRN...Brown
 BLU...Blue
 RED...Red
 BLK...Black
 ORG...Orange

REPLACEMENT PARTS LIST

Notes: *Important safety notice:
 Components identified by Δ mark have special characteristics important for safety.
 Furthermore, special parts which have purposes of fire-retardant (resistors), high-quality sound (capacitors, low-noise resistors), etc. are used.
 When replacing any of components, be sure to use only manufacturer's specified parts shown in the parts list.
 *The parenthesized indications in the Remarks columns specify the areas. (Refer to the cover page for areas.)
 Parts without these indications can be used for all areas.

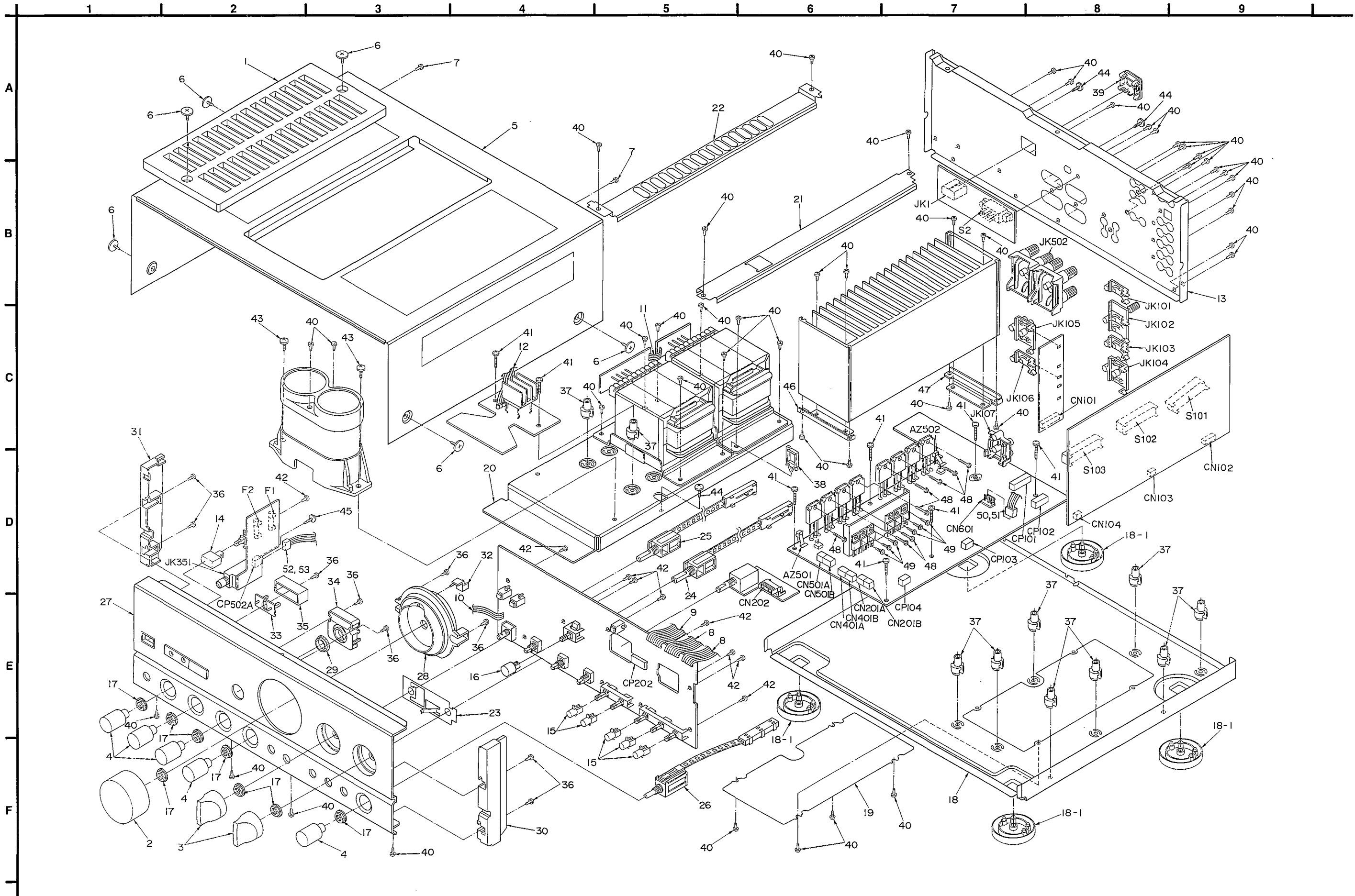
Ref. No.	Part No.	Part Name & Description	Remarks	Ref. No.	Part No.	Part Name & Description	Remarks
		INTEGRATED CIRCUIT(S)		D453-455	WA185	DIODE	
		TRANSISTOR(S)		D601	5YD510V20F	DIODE	Δ
		DIODE(S)		D602	1S8352007R	DIODE	Δ
		TRANSFORMER(S)		TI.2	WPIPE003-W	POWER TRANSFORMER	Δ
		RELAY(S)		RL501, 502	RSY0013-0	RELAY	
		FUSE(S)		FL.2	XR2207B0	FUSE, 250V T2.0A	Δ
		SWITCH(ES)					
		CONNECTOR(S)		CP101	RJ7057W012-1	CONNECTOR (12P)	
		TEST POINT		TP501	SJT3209	TEST POINT	
		SOCKET(S)		CKN01	RJ0057W012	SOCKET (12P)	
		PLUG(S)		CKN01	RJ1A3404	PLUG (4P)	
		SOLENOID(S)					
		COIL(S)		L1	SLQ2650M40	COIL	Δ
		RESISTOR(S)					
		VARIABLE RESISTOR(S)					
		THERMISTOR(S)		TH601, 502	EKT02ZHL104T	THERMISTOR	
		INDUCTOR(S)					
		SHIELD PLATE		E101	SMC1009	SHIELD PLATE	
		GND PLATE		E601	SNE1004-1	GND PLATE	
		FUSE HOLDER(S)		FC1-4	EYF520C	FUSE HOLDER	Δ
		JACK(S)					
		HEADPHONE JACK		JR101	RSY05A237P12	RELAY	
		AC INLET					
		AC INLET					

Notes : * Capacity values are in microfarads (uF) unless specified otherwise, P=Pico-farads (pF) F=Farads (F)
 * Resistance values are in ohms, unless specified otherwise, 1K=1,000(OHM) , 1M=1,000K(OHM)

Ref. No.	Part No.	Values & Remarks	Ref. No.	Part No.	Values & Remarks	Ref. No.	Part No.	Values & Remarks
RESISTORS			R437	ERDS2TJ473	1/4W 47K	R585-592	ERG1SJ100E	1W 10
R101-104	ERDS2TJ102	1/4W 1K	R439	ERDFS2VJ6R8T	1/4W 6.8	R593-598	ERF2EXKR22V	2W 0.22
R105, 106	ERDS2TJ473	1/4W 47K	R451, 452	ERDFS2VJ472T	1/4W 4.7K	R601	ERDS1FVJ180T	1/2W 18 Δ
R107, 108	ERDS2TJ221	1/4W 220	R453, 454	ERDS2TJ151	1/4W 150	R602	ERDS2TJ151	1/4W 150
R109, 110	ERDS2TJ220T	1/4W 22	R455, 455	ERDFS2VJ271T	1/4W 270	R603, 604	ERDFS2VJ6R8T	1/4W 6.8
R111, 112	ERDS2TJ100	1/4W 10	R457	ERDS2TJ823T	1/4W 82K	R605, 606	ERDFS2VJ4R7T	1/4W 4.7
R113-118	ERDAS3G272T	1/4W 2.7K	R459, 460	ERDFS2VJ101T	1/4W 100	R607, 608	ERG1SJ101E	1W 100
R119, 120	ERDS2TJ101	1/4W 100	R461-464	ERDS2TJ273	1/4W 27K	R609	ERDS2TJ151	1/4W 150
R121, 124	ERDAS3G121	1/4W 120	R465-468	ERDFS2VJ101T	1/4W 100	R610	ERDS2TJ681	1/4W 680
R125, 126	ERDS2TKF5231	1/4W 5.23K	R469, 470	ERDFS2VJ182T	1/4W 1.8K	R611-616	ERG1SJ101E	1W 100
R127, 128	ERDS2TKG6802	1/4W 68K	R471-474	ERDFS2VJ2R2T	1/4W 2.2	R651, 652	ERDS2TJ223	1/4W 22K
R129, 130	ERDS2TJ334	1/4W 330K	R501, 502	ERDFS2VJ681T	1/4W 680	R653	ERDS2TJ102	1/4W 1K
R131, 132	ERDAS3G561	1/4W 560	R503, 504	ERDFS2VJ121T	1/4W 120	R654	ERDS2TJ153	1/4W 15K
R133, 134	ERDS2TJ274	1/4W 270K	R505, 506	ERDFS2VJ681T	1/4W 680	R655	ERDS2TJ823T	1/4W 82K
R135, 136	ERDS2TJ223	1/4W 22K	R507, 508	ERDFS2VJ121T	1/4W 120	R656	ERDS2TJ153	1/4W 15K
R137, 138	ERDAS3G471T	1/4W 470	R509-512	ERF2EXKR22V	2W 0.22	R657, 658	ERDS2TJ102	1/4W 1K
R151	ERDS2TJ680T	1/4W 68	R513-516	ERDFS2VJ100T	1/4W 10	CAPACITORS		
R152, 153	ERG1SJ152E	1W 1.5K	R517, 518	ERDFS2VJ1R0T	1/4W 1	C1	ECKWNS103ZVS	500V 0.01C Δ
R175-178	ERDAS3G471T	1/4W 470	R519, 520	ERDFS2VJ100T	1/4W 10	C101, 102	ECBT1H220J5	50V 22P
R181, 194	ERDAS3G471T	1/4W 470	R521, 522	ERF2EXKR22V	2W 0.22	C107, 108	ECQB1H1C2JF3	50V 1000P
R195, 196	ERDLS2VJ471T	1/4W 470	R523, 524	ERDFS2VJ332T	1/4W 3.3K	C109, 110	ECQB1H222JF3	50V 2200P
R211, 212	ERDAS3G223T	1/4W 22K	R525, 526	ERDFS2VJ102T	1/4W 1K	C111, 112	ECBT1H270J5	50V 27P
R213, 214	ERDS2TJ183T	1/4W 18K	R527, 528	ERDFS2VJ332T	1/4W 3.3K	C113, 114	ECADJAP332E	6.3V 3300C
R215, 216	ERDS2TJ272T	1/4W 2.7K	R529, 530	ERDS2TJ104	1/4W 100K	C115, 116	ECQB1H392JF3	50V 3900P
R217	ERDS2TJ824	1/4W 820K	R531, 532	ERDFS2VJ331T	1/4W 330	C117, 118	ECQB1H103JF3	50V 0.01C
R219, 220	ERDAS3G471T	1/4W 470	R533-536	ERDFS2VJ2R2T	1/4W 2.2	C119, 120	ECQV1H73JZ3	50V 0.047C
R221, 222	ERDAS3G393T	1/4W 39K	R537-540	ERF2EXKR22V	2W 0.22	C121, 122	ECA1HPXS010B	50V 10
R223, 224	ERDAS3G392T	1/4W 3.9K	R541, 544	ERDFS2VJ561T	1/4W 560	C123, 124	ECQB1H472JF3	50V 4700P
R231, 232	ERDAS3G472T	1/4W 4.7K	R545, 546	ERDS2TJ153	1/4W 15K	C125, 126	ECQV1H564Z3	50V 0.56C
R233, 234	ERDAS3G124T	1/4W 120K	R547, 548	ERDFS2VJ271T	1/4W 270	C127, 128	ECQB1H223JF3	50V 0.022U
R301, 302	ERDAS3G561	1/4W 560	R549, 550	ERDFS2VJ472T	1/4W 4.7K	C129, 130	ECA1HPXS4R7B	50V 4.7U
R303, 304	ERDS2TJ823T	1/4W 82K	R551	ERDS2TJ473	1/4W 47K	C131-134	ECKT1H102KB	50V 1000P
R305, 306	ERDS2TJ224T	1/4W 220K	R552	ERDS2TJ563	1/4W 56K	C135, 136	ECBT1H390J5	50V 39P
R307, 308	ERDS2TJ392T	1/4W 3.9K	R553	ERDS2TJ153	1/4W 15K	C151	ECA1CAP47CB	16V 47U
R309, 310	ERDS2TJ223	1/4W 22K	R554	ERDS2TJ103	1/4W 10K	C175, 176	ECBT1H181KB5	50V 180P
R311, 312	ERDS2TJ102	1/4W 1K	R555	ERDS2TJ563	1/4W 56K	C177, 178	ECBT1H101KB5	50V 100P
R313, 314	ERDS2TJ562	1/4W 5.6K	R556	ERDS1FVJ682T	1/2W 6.8K Δ	C181-186	ECCR1H101K5	50V 100P
R315, 316	ERDAS3G392T	1/4W 3.9K	R557	ERDS2TJ153	1/4W 15K	C187, 188	ECCR1H181K5	50V 180P
R317, 318	ERDAS3G223T	1/4W 22K	R559, 560	ERDS1FVJ190T	1/2W 10 Δ	C189, 190	ECCR1H1C1K5	50V 100P
R319, 320	ERDS2TJ183T	1/4W 18K	R561, 562	ERDS1FVJ561T	1/2W 560 Δ	C191, 192	ECBT1H181KB5	50V 180P
R321, 322	ERDAS3G182	1/4W 1.8K	R563, 564	ERG1SJ151E	1W 150	C193-196	ECCR1H101K5	50V 100P
R401, 402	ERDLS2VJ122T	1/4W 1.2K	R565-568	ERDFS2VJ2R2T	1/4W 2.2	C213, 214	ECQV1H563JZ3	50V 0.056U
R403, 404	ERDS2TJ823T	1/4W 82K	R569	ERDFS2VJ6R8T	1/4W 6.8	C301, 302	ECA1HPXS3R3B	50V 3.3U
R405, 406	ERDAS3G272T	1/4W 2.7K	R570	ERDS1FVJ272T	1/2W 2.7K Δ	C303, 304	ECBT1H101KB5	50V 100P
R407, 408	ERDAS3G823T	1/4W 82K	R571-574	ERDFS2VJ681T	1/4W 680	C305, 306	ECBT1H820KB5	50V 82P
R409, 410	ERDS2TJ561	1/4W 560	R575, 576	ERDS2TJ103	1/4W 10K	C307, 308	ECA1HPXS4R7B	50V 4.7U
R411, 412	ERDFS2VJ470T	1/4W 47	R577, 578	ERG1SJ181E	1W 180	C309, 310	ECBT1H390J5	50V 39P
			R579, 580	ERDFS2VJ332T	1/4W 3.3K			
			R581, 582	ERDS1FVJ561T	1/2W 560 Δ			

Ref. No.	Part No.	Values & Remarks
C311, 312	ECA1CPXS100B	16V 10U
C313, 314	ECQV1H823JZ	50V 0.082U
C315, 316	ECQB1H153JF3	50V 0.015U
C317, 318	ECQB1H183JF3	50V 0.018U
C319, 320	ECQB1H182JF3	50V 1800P
C321, 322	ECQB1H822JF3	50V 8200P
C401, 4C2	ECA1HPXS3R3B	50V 3.3C
C403, 4C4	ECBT1H271KB5	50V 270P
C405, 406	ECA1CPXS220B	16V 22C
C407, 408	ECBT1H820KB5	50V 82P
C409, 410	ECBT1H100J5	50V 10P
C411, 412	ECBA1H681KB5	50V 680P
C413, 414	ECV2H070D	500V 7P
C415, 418	ECBT1H102KB5	50V 1000P
C427, 428	ECQB1H223JF3	50V 0.022U
C429	ECA2APXS010B	100V 10U
C451, 452	ECBT1H104ZF5	50V 0.1U
C453, 456	ECV2H680K	500V 68P
C457, 460	ECA1HKA010B	50V 1U
C501, 504	ECA0JPXS101B	6.3V 100C
C505, 508	ECQV1H224JZ	50V 0.22U
C509, 510	ECQB1H822JF3	50V 8200P
C513-516	ECKR1H473ZF5	50V 0.047U
C517, 518	ECBT1H821KB5	50V 820P
C519, 526	ECKR1H103ZF5	50V 0.01U
C527, 528	ECBT1H104ZF5	50V 0.1U
C529	ECA0JAP331B	6.3V 330U
C530	ECFR1E223KR	25V 0.022U
C531	ECA0JKA470B	6.3V 47U
C532, 533	ECA1EKA4R7B	25V 4.7U
C541-544	ECCR1H181K5	50V 180P
C545-548	ECQB1H153KF3	50V 0.015U
C549	ECKR1H103ZF5	50V 0.01U
C553, 554	ECBT1H102KB5	50V 1000P
C555-558	ECBA1H681KB5	50V 580P
C603, 604	ECA2APXS101E	100V 100C
C605, 606	ECR1H103JZ3	50V 0.01U
C607, 608	ECED71M153T	71V 1500U Δ
C609	ECA1CM221B	16V 220U
C611-614	ECA2APXS010B	100V 10U
C615, 616	ECQE2104KF3	100V 0.1U Δ
C651-653	ECA1EPXS100B	25V 10C
C654, 655	ECA1HPXS3R3B	50V 3.3C
C656	ECBT1H821KB5	50V 820P
C657, 658	ECKR1H103ZF5	50V 0.01U

■ CABINET PARTS LOCATION



Ref. No.	Part No.	Part Name & Description	Remarks	Ref. No.	Part No.	Part Name & Description	Remarks
		CABINET PARTS		47	RMQ0240	ANGLE	
				48	SNE2117-1	SCREW	
				49	XTB3+8JFZ	SCREW	
1	RGK0397-K	UPPER PLATE		50	RJSA3404	SOCKET (4P)	
2	RGW0122-K	VOLUME KNOB		51	RJT053	TERMINAL	
3	RGW0123-K	REC. /INPUT KNOB		52	SJS5331	SOCKET (3P)	
4	RGW0150-K	TONE/PHONO/S. P. SELECT KNOB		53	SJT783	TERMINAL	
5	RK00172-K	CABINET					
6	SNE2129-3	SCREW				PACKING MATERIALS	
7	XTBS3+8JFZ1	SCREW					
8	RWJ3910170QQ	FLAT CABLE (10P) (W201, W401)		P1	RPG1213	PACKING CASE	
9	RWJ3909170QQ	FLAT CABLE (9P) (W501)		P2	RPNO511-1	PAD	
10	RWJ3903070XQ	FLAT CABLE (3P) (W502)		P3	SPH223	PROTECTION SHEET (A)	
11	RWJ3904050KK	FLAT CABLE (4P) (W605)		P4	SPH6434	PROTECTION SHEET (B)	
12	RWJ3907150QQ	FLAT CABLE (7P) (W601)		P5	RPQ0164	ACCESSORIES BOX	
13	RGR0124B-AA	REAR PANEL	(EG)	P6	XZB24X34C04	PROTECTION COVER (ACCESSORY)	
13	RGR0124B-BA	REAR PANEL	(EB, GN)				
14	RGU0030	POWER BUTTON				ACCESSORIES	
15	RGU0609-K	LOUDNESS/MUTING/MODE BUTTON					
16	RGU0611-K	DIRECT BUTTON		A1	RFKSUVX820EG	INSTRUCTIONS MANUAL	(EG)
17	RHN90001	NUT		A1	RQT1486-B	INSTRUCTIONS MANUAL	(EB, GN)
18	RFKJUVX800EX	BOTTOM BOARD ASS'Y		A2	RQAD013	WARRANTY CARD	(EG, EB)
18-1	RKA0009-1	FOOT		A2	RQX7433ZA	WARRANTY CARD	(GN)
19	RKL0036	BOTTOM PLATE		A3	RQCB0169	SERVICE CENTER LIST	
20	RMA0476-2	ANGLE		A4	RJA0019-1K	AC POWER SUPPLY CORD	△(EG)
21	RMA0584	SIDE ANGLE		A4	SJA193	AC POWER SUPPLY CORD	△(EB)
22	RMA0585	CENTER ANGLE		A4	SJA173	AC POWER SUPPLY CORD	△(GN)
23	RMQ0255-1	PLATE					
24	RSQ0019	REMOTE SWITCH (INPUT)					
25	RSQ0020	REMOTE SWITCH (REC. SEL.)					
26	RSQ0021	REMOTE SWITCH (PHONO)					
27	RFKJUVX920EG	FRONT PANEL ASS'Y					
28	RGK0393-K	VOLUME ORNAMENT					
29	RGK0394-A	RING					
30	RGK0398-K	SIDE ORNAMENT (R)					
31	RGK0399-K	SIDE ORNAMENT (L)					
32	RGL0136-C1	ORNAMENT					
33	RGL0164-C	ORNAMENT					
34	RMR0460-K	HOLDER					
35	RMR0461-K	HOLDER					
36	XTBS26+8J	SCREW					
37	SHE187-2	P. C. B. SPACER					
38	SHR9814	CLUMPER					
39	SJS9231A	AC INLET COVER	(EG, EB)				
39	SJS9234A	AC INLET COVER	(GN)				
40	XTBS3+8JFZ1	SCREW					
41	XTB3+20JFZ	SCREW					
42	XTBS26+8J	SCREW					
43	XTB4+10FFZ	SCREW					
44	XTB4+8FFZ	SCREW					
45	XTWS3-8T	SCREW					
46	RMQ0239	ANGLE					

■ PACKAGING

1049

